

## **SOUNDWIN** 2 -4 Analog Lines FXS/FXO VoIP Gateway



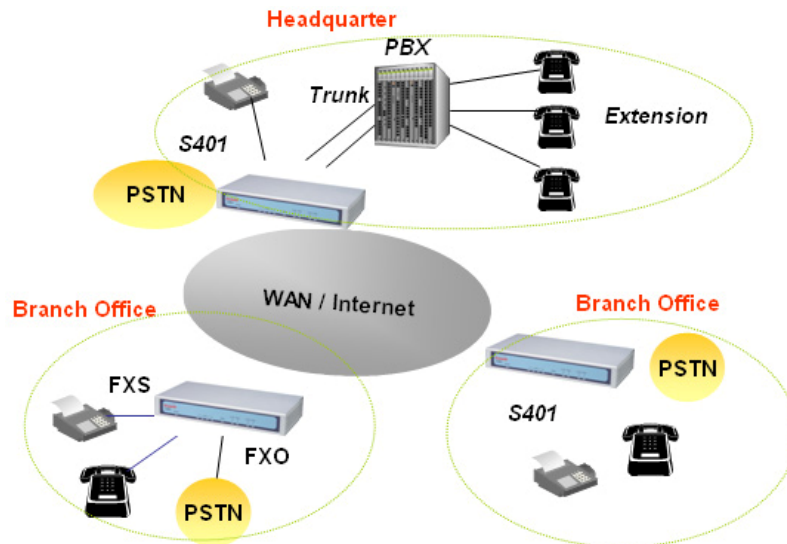
*The Soundwin S200/S400 Series VoIP Gateway is fully both SIP and H.323 standard compliant residential gateway that provides a total solution for integrating voice-data network and PSTN. By simple installation, this revolutionary compact voice over IP (VoIP) gateway could be configured as a 2/4 port FXS/FXO VoIP Gateway which provides voice connectivity over the IP network and to the Public Switched Telephone Network (PSTN). The Soundwin Gateway is equipped with a four port Ethernet switch and built-in NAT router function that provides Internet access using only one IP address. Besides, it provides high voice quality and optimized packet voice streaming over managed and public (Internet) IP networks.*

### **VoIP Key Features**

- ☒ Both support H.323 and SIP protocols: H.323 Gatekeeper Registration, SIP Registration and Digest Authentication.
- ☒ Stackable VoIP Architecture: Stackable SIP calls with multiple VoIP Gateways.
- ☒ Caller ID Delivery and Detection: FXS support DTMF&FSK Caller ID generation; FXO supports DTMF&FSK Caller ID detection.
- ☒ Smart VoIP call Dialing Book: VoIP call Book could provide any application VoIP call to any type destination (Domain name / IP address, PSTN or PBX) or hunting number setting.
- ☒ AC termination Impedance : 600/900 OHM and complex impedance
- ☒ Polarity Reversal Detection: Type I and Type II
- ☒ Answer Supervision for Voice Detection
- ☒ NAT traversal: This feature allow gateway to operate behind any NAT/Firewall device. There is no need to change any configuration of NAT/Firewall like setting virtual server.
- ☒ Smart-QoS Guaranteed: This bandwidth management feature provide good voice quality when user place a VoIP call and access internet at the same time. The gateway will automatically start to reserve bandwidth for voice traffic when VoIP call proceeds.
- ☒ Voice channels status display: This function display each port status like as onhook, offhook, calling number callee's number, talk duration, codec.
- ☒ Pulse Dial support: Support pulse dialing generation and detection.(Optional)
- ☒ Flash Detection and Generation Program: FXO support Flash Generation and FXS support Flash Detection.

## Application Scenario:

The following application was used in Multi-Office as an example:



## Telephony Specification:

- ☒ Voice Codec: G.711(A-law /  $\mu$ -law), G.729 AB, G.723 (6.3 Kbps / 5.3Kbps)
- ☒ FAX support : T.30 / T.38
- ☒ Echo Cancellation: G.165/G168
- ☒ FXO Caller ID detection : DTMF and FSK
- ☒ Answer supervision: Support Reverse Battery Detection and Voice Detection.
- ☒ Adjustable AC Termination Impedance : 600 / 900 OHM and complex Impedance
- ☒ Life-Line support ( Internet / power failure over relay)
- ☒ Polarity Reversal : Type I and Type II
- ☒ 12K Hz and 16K Hz Metering

## IP Specifications:

- ☒ H.323 v2/v3/v4 and SIP (RFC 3261) , SDP (RFC 2327), Symmetric RTP, STUN (RFC3489), ENUM (RFC 2916), RTP Payload for DTMF Digits (RFC2833), Outbound Proxy Support.
- ☒ LAN :Support Virtual Server, DHCP Server
- ☒ WAN: Support PPPoE client, DHCP client, Fix IP Address, DDNS client
- ☒ Network Address Translation: Providing build-in NAT router function.
- ☒ Smart QoS: Guarantee the voice bandwidth

## Call Features

- ☒ Voice channels status display
- ☒ Direct Dialing Mode : peer to peer call (support IP Address Call or Domain Name Call)
- ☒ Register Call Mode : register to H.323 Gatekeeper or SIP Proxy Server
- ☒ Adjustable volume : - 9 db ~ 9 db
- ☒ Silence Compression
- ☒ Auto Dial for speed
- ☒ Dynamic Jitter Buffer

## • **Configuration & Management**

- ☒ Web-based Graphical User Interface
- ☒ Remote management over the IP Network
- ☒ FTP firmware upgrade
- ☒ Backup and Restore Configuration file
- ☒ Syslog support

## • **General Specification**

- ☒ AC power : AC100V-240V, DC12V/1.5A,50/60 Hz
- ☒ Temperature: 0°C ~ 40°C (Operation)
- ☒ Humidity: up to 90% non-condensing
- ☒ Emission: FCC Part 15 Class B, CE Mark
- ☒ Dimension : 260 x 130 x 35 mm
- ☒ Weight: 900g (Aluminum )

## S400/200 VoIP Gateway Catalogue

	S400	S401	S402	S404	S200	S201	S202
<i>Ethernet Port</i>	4 LAN + 1 WAN						
<i>Telephony Interface</i>	Quad RJ-11				Dual RJ-11		
<i>FXS/FXO</i>	4FXS	3FXS+1FXO	2FXS+2FXO	4FXO	2FXS	1FXS+1FXO	2FXO
<i>H.323 v2/v3/v4</i>	✓	✓	✓	✓	✓	✓	✓
<i>SIP(RFC3261)</i>	✓	✓	✓	✓	✓	✓	✓
<i>Smart-Qos</i>	✓	✓	✓	✓	✓	✓	✓
<i>NAT Traversal</i>	✓	✓	✓	✓	✓	✓	✓
<i>Echo Cancellation</i>	✓	✓	✓	✓	✓	✓	✓
<i>G.711 a/u law</i> <i>G.723, G729AB</i>	✓	✓	✓	✓	✓	✓	✓
<i>T.38/T.30</i>	✓	✓	✓	✓	✓	✓	✓
<i>NAT Router</i>	✓	✓	✓	✓	✓	✓	✓
<i>DHCP server for Private Network</i>	✓	✓	✓	✓	✓	✓	✓

Soundwin Network, Inc. - Headquarters  
10F-4, No. 295, Sec. 2, Guangfu Rd.,  
Hsinchu City, Taiwan

Tel: +886-3-5733113

Fax: +886-3-5736131

E-mail: [sales@soundwin.com](mailto:sales@soundwin.com)

Web Site: <http://www.soundwin.com>